

PLANT TECHNICIAN



community rewarding challenging
training collaboration
career capability
adventure
skills dreams sustainability
competency
commitment change hope
success hse future growth
development industry

Your **Passport** to a Successful **Career**

What is a PLANT TECHNICIAN?

A Plant Technician helps ensure the reliability, efficiency and safety of prod facility by proactively monitoring the plant process, diagnosing the abnorm and taking the corrective intervention to remedy the prob

Qualification & Entry Requiremen

- Brunei Citizen/Permanent Reside
- Pass medical fitness
- Pass interview
- Physically fit
- Complete HNTec Plant Engineering Program

Requirements of a Plant Technician:

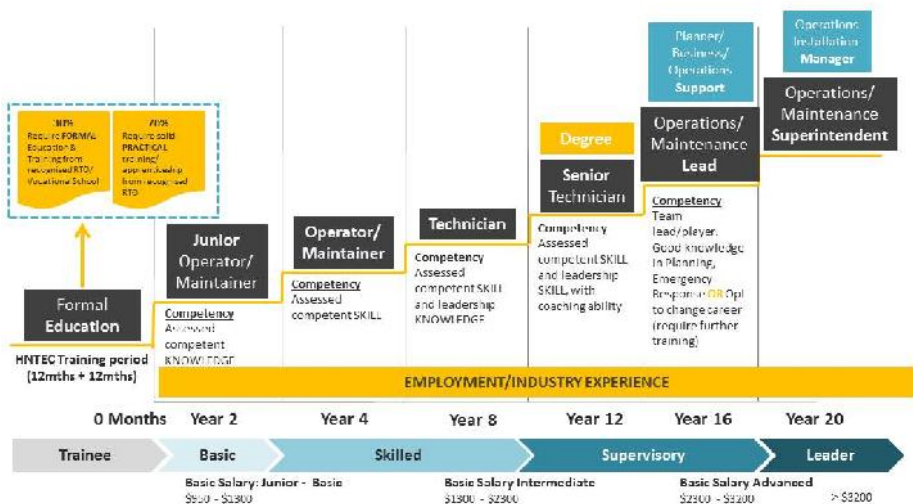
- Physically fit and strong
- Good hand-eye coordinati
- Able to work in outdoor conditi
- Able to work at heights
- Able to work on shift (2x12 h
- Able to work offshore on shift rotatic (14days)

Roles & Responsibiliti

- Perform Job Hazards Analysis.
- Ensure smooth and safe start-up, shutdown and production operations of plant.
- Monitor operational performance against pla
- Plan and execute maintenance activiti
- Carry out troubleshooting and immediate intervention in the event of plai set and breakdown of equipment.

Career Pathway of PLANT TECHNICIAN

ENERGY INDUSTRY COMPETENCY FRAMEWORK



The Higher National Technical Education Certificate (HNTec) in Plant Engin

course provides necessary technical background to enable students to reach a reasonable standard of competence as technician.

Entry Requirements:

Students must fulfill the minimum entry requirement of **three (3) GCE 'O'/IGCSE** level CREDITS in the following subjects:-

- Mathematics or Additional Mathematics (Grade 1 – 6)
- English Language (Grade 1 – 6)
- 1 Approved subject in Science related (Grade 1 – 6)

Curriculum:

- Islamic Religious Knowledge
- Melayu Islam Beraja
- Life Skill For Workplace
- Health, Safety, Security and Environment
- Introduction to Oil & Gas Industry
- Engineering Science
- Flow Scheme/Drawing
- Applied Thermofluids
- Plant Services Drawing
- Electrical & Electronics Principles
- Instrumentation & Process Measurements
- Workshop Theory & Practice
- Process Plant Equipment 1
- Engineering Materials and Processes
- Basic Instrumentation and Process Control
- Process Plant Equipment 2
- Plant Pneumatics & Hydraulics
- Industrial Gas Turbine
- Introduction to Well Engineering
- Plant Combustion and Steam
- Process Plant Equipment 3
- Plant Operations and Maintenance

Duration/Venue

- The duration of this programme is **2 years full time**.
- Training will be held at **Maktab Kejuruteraan Jefri Bolkih, Kuala Belait.**

For more information please contact

Maktab Kejuruteraan Jefri Bolkih
Jalan Setia Negara, Kuala Belait KA1931
Negara Brunei Darussalam
Tel: 673-3332902/3332903
Fax: 673-3331630
Website: www.mkjb.edu.bn





eicf@energy.gov.bn



[https://www.facebook.com/
eicf.project](https://www.facebook.com/eicf.project)



eicf_brunei